

Tree Inventory Report
9 Erskine Lane, Victoria
Completed: May 4th, 2020

Table 1. Inventory Summary

Species	Scientific Name	DBH (cm)	Number of trees
Coniferous			
Balsam fir	<i>Abies balsamea</i>	60 mm to 300 mm	2
Douglas fir	<i>Pseudotsuga menziesii</i>	60 mm to 300 mm	228
		301 mm to 600 mm	228
		601 mm +	78
Grand fir	<i>Abies grandis</i>	60 mm to 300 mm	39
		301 mm to 600 mm	20
		601 mm +	8
Leylandii	<i>Cupressus leylandii</i>	60 mm to 300 mm	6
Deciduous			
Apple	<i>Malus domestica</i>	60 mm to 300 mm	1
Arbutus	<i>Arbutus menziesii</i>	60 mm to 300 mm	64
		301 mm to 600 mm	31
		601 mm +	4
Bigleaf maple	<i>Acer macrophyllum</i>	60 mm to 300 mm	101
		301 mm to 600 mm	32
		601 mm +	6
Cherry	<i>Prunus</i>	60 mm to 300 mm	3
Garry oak	<i>Quercus garryana</i>	60 mm to 300 mm	203
		301 mm to 600 mm	3
Hawthorn		60 mm to 300 mm	8
Holly		60 mm to 300 mm	14
		301 mm to 600 mm	1
Red alder	<i>Ulnus rubra</i>	60 mm to 300 mm	1
Willow	<i>Salix</i>	60 mm to 300 mm	9
		301 mm to 600 mm	2
		Total Trees	1092



Inventory key notes:

- Diameter at Breast Height (DBH) measurements are taken at 4.3 meters from ground level.
- MS refers to there being multiple stems growing from the same stump, each dbh measurement taken with ms preceding indicates diameter of each co-dominate stem.
- Measurements listed in DBH column represent a tree of possible significance, the tree is already included in the count represented in the dbh range columns.
- Waypoints 271, 272, 274, 319-324, 354, 355 represent trees in close proximity to property line with critical root zones within subject property boundary.

Please contact MJR Tree Service with any further questions.

Report prepared by:

Shane Harris
ISA Certified Arborist ON-1008A
ISA Qualified Tree Risk Assessor
BC Certified Wildlife Danger Tree Assessor

Jayson Fearon
ISA Certified Arborist PN-7974A
ISA Qualified Tree Risk Assessor

On behalf of:

MJR Tree Service
7647 Superior Road
Lantzville, BC
V0R2H0
(250) 616-8906
mjtreeservice@gmail.com

2020-05-06 9 Erskine Lane Tree Location Key



Source: Esri, DigitalGlobe, GeoEye, Earthstar Geographics, CNES/Airbus DS, USDA, USGS, AeroGRID, IGN, and the GIS User Community

Tree Inventory
9 Erskin Lane, Victoria

Completed on May 4th, 2020

Waypoint	Species	60mm to 300mm	301mm to 600mm	601mm +	DBH (cm)
31	Douglas-fir		1	2	
31	Bigleaf maple	3			
32	Bigleaf maple	2			
32	Douglas-fir	1			
33	Douglas-fir	1		1	78
34	Douglas-fir	3	2		
35	Bigleaf maple	1			
36	Douglas-fir	1	1		
36	Bigleaf maple	3			
36	Garry oak	1			
37	Bigleaf maple		1		60
37	Douglas-fir	1			
38	Grand fir		1		
38	Douglas-fir	3	1	1	75
38	Bigleaf maple	1	1		
39	Douglas-fir	1	1		
39	Holly	1			
40	Grand fir	1	2		
41	Arbutus			1	64
41	Douglas-fir	1	2		
42	Douglas-fir	1			
42	Arbutus			1	91
43	Bigleaf maple		2		
44	Bigleaf maple		1		
45	Douglas-fir	4		1	66
46	Douglas-fir	6			
47	Douglas-fir	3			
48	Douglas-fir	6	2	1	
49	Douglas-fir	2	2		
50	Garry oak	1			30
51	Garry oak		1		35/35
52	Douglas-fir	3	2		
53	Douglas-fir		2		
54	Douglas-fir	2	2		
55	Douglas-fir	2	2		
56	Bigleaf maple	1			
56	Douglas-fir	1	1		
57	Bigleaf maple	1			
57	Douglas-fir	1	4		
58	Douglas-fir	1			
58	Bigleaf maple	1			
59	Douglas-fir	1	4		
60	Douglas-fir	1			
61	Douglas-fir		1		
62	Douglas-fir	1	1		
62	Arbutus	1			

Tree Inventory
9 Erskin Lane, Victoria

Completed on May 4th, 2020

Waypoint	Species	60mm to 300mm	301mm to 600mm	601mm +	DBH (cm)
63	Douglas-fir	1		1	68
64	Douglas-fir		1	1	70
65	Bigleaf maple		2	1	77
65	Douglas-fir	2	1	1	66
66	Grand fir		1		
66	Douglas-fir	1	1		
66	Douglas-fir	1	1		
66	Bigleaf maple		2		
66	Grand fir		1		
66	Bigleaf maple		2		
67	Grand fir		2		
67	Arbutus	1			30
67	Bigleaf maple	1			
67	Bigleaf maple	1			
67	Arbutus	1			30
67	Grand fir		2		
68	Douglas-fir			1	94
68	Douglas-fir			1	94
69	Bigleaf maple	2			
69	Douglas-fir	1		1	63
69	Arbutus		1		54
69	Arbutus		1		54
69	Bigleaf maple	2			
69	Douglas-fir	1		1	63
70	Douglas-fir	3	2		
70	Douglas-fir	3	2		
70	Bigleaf maple	1			
70	Bigleaf maple	1			
71	Bigleaf maple	3			
71	Douglas-fir		1		
71	Bigleaf maple	3			
71	Douglas-fir		1		
72	Bigleaf maple	1	1		
72	Douglas-fir		1		
72	Garry oak		1		
72	Douglas-fir		1		
72	Bigleaf maple	1	1		
72	Grand fir	1			
73	Douglas-fir			1	67
73	Douglas-fir			1	63
74	Douglas-fir			1	78
74	Douglas-fir			1	78
75	Grand fir		1	1	81
75	Grand fir			1	73
75	Douglas-fir			1	81
75	Douglas-fir			1	

Tree Inventory
9 Erskin Lane, Victoria

Completed on May 4th, 2020

Waypoint	Species	60mm to 300mm	301mm to 600mm	601mm +	DBH (cm)
76	Douglas-fir			1	73
76	Grand fir	1			
77	Douglas-fir			1	80
77	Douglas-fir	3	1		
78	Douglas-fir		1		
79	Douglas-fir	3		1	69
79	Bigleaf maple	1			
80	Bigleaf maple			1	67
81	Douglas-fir		1		
81	Grand fir	1			
82	Douglas-fir	1	2		
83	Douglas-fir	3			
84	Bigleaf maple	1			
84	Douglas-fir		1		
84	Holly	1			
85	Douglas-fir		3		
85	Grand fir	1			
86	Douglas-fir	1		1	61
87	Bigleaf maple	2			
87	Douglas-fir	3	1		
88	Douglas-fir		1		
89	Douglas-fir		3		
90	Douglas-fir		1		
90	Hawthorn	4			
91	Willow	2			
92	Willow	2	1		
92	Douglas-fir	1	2		
92	Bigleaf maple	1			
93	Douglas-fir	1	1		
94	Douglas-fir	2	2		
94	Bigleaf maple		1		
95	Grand fir	1			
95	Douglas-fir	1		1	70
95	Hawthorn	1			
95	Bigleaf maple	1	1		
96	Douglas-fir		1		
97	Douglas-fir		1		
98	Douglas-fir		1		
99	Bigleaf maple		1		
100	Douglas-fir	1	2	1	70
101	Douglas-fir	1	1	1	68
101	Grand fir	4			
103	Douglas-fir		1		
103	Grand fir	4	1		
104	Douglas-fir			1	85
105	Holly		1		

Tree Inventory
9 Erskin Lane, Victoria

Completed on May 4th, 2020

Waypoint	Species	60mm to 300mm	301mm to 600mm	601mm +	DBH (cm)
105	Douglas-fir			1	88
106	Grand fir			1	65
106	Douglas-fir	1			
106	Bigleaf maple		1		
107	Bigleaf maple	1	1		
107	Grand fir	1			
108	Bigleaf maple	2			
109	Grand fir	1			
109	Douglas-fir			1	79
110	Holly	4			
110	Grand fir	1			
111	Holly	3			
111	Bigleaf maple		1		
112	Bigleaf maple		1	1	78
113	Holly	1			
113	Bigleaf maple	2	1		
113	Grand fir	2			
114	Grand fir		1		
115	Douglas-fir		1		
115	Bigleaf maple		1		
116	Douglas-fir		1		
116	Holly	1			
117	Douglas-fir	1		1	98
118	Grand fir		1		
120	Grand fir	1			
120	Douglas-fir	1		1	100+
121	Grand fir	2			
122	Grand fir		1		
122	Douglas-fir			1	87
123	Grand fir	1			
123	Douglas-fir		1		
124	Grand fir	1	1		
124	Douglas-fir			1	84
125	Bigleaf maple	4			
125	Douglas-fir		1		
125	Grand fir	1			
126	Douglas-fir		2		
127	Douglas-fir		3		
128	Douglas-fir	1	4		
129	Bigleaf maple	1	1		
130	Douglas-fir	2	1		
130	Bigleaf maple	1	1		
130	Hawthorn	1			
131	Douglas-fir		1		
132	Bigleaf maple	1			
133	Douglas-fir		2		

Tree Inventory
9 Erskin Lane, Victoria

Completed on May 4th, 2020

Waypoint	Species	60mm to 300mm	301mm to 600mm	601mm +	DBH (cm)
133	Bigleaf maple	1			
134	Arbutus		1		32
135	Arbutus		1		34
135	Douglas-fir				75
135	Grand fir	1			
136	Arbutus	1			
136	Grand fir	1			
136	Douglas-fir		1	1	85
137	Douglas-fir	1	4		
137	Red alder	1			
138	Douglas-fir	1	1		
138	Bigleaf maple	1			
139	Douglas-fir	4	3		
140	Douglas-fir		1		
140	Bigleaf maple	2			
141	Douglas-fir		4		
142	Douglas-fir	2	1		
142	Bigleaf maple	2			
143	Bigleaf maple	2	1		
144	Bigleaf maple	2			
144	Douglas-fir			1	73
145	Bigleaf maple	1			
145	Douglas-fir		1		
146	Willow	1			
146	Douglas-fir	1	5	1	80
146	Bigleaf maple	1			
147	Arbutus	1			
147	Douglas-fir	1		1	70
147	Bigleaf maple	1			
148	Bigleaf maple	1			
148	Douglas-fir	1	1	1	75
149	Douglas-fir		1		
149	Cherry	3			
149	Grand fir	1			
149	Willow		1		
150	Douglas-fir		1		
150	Grand fir	1			
151	Hawthorn	1			
151	Douglas-fir			1	62
152	Bigleaf maple	2			
153	Douglas-fir			1	90
153	Arbutus		1		40
154	Arbutus	1			
154	Bigleaf maple	3	1		
155	Bigleaf maple			1	70
155	Douglas-fir	1	1		

Tree Inventory
9 Erskin Lane, Victoria

Completed on May 4th, 2020

Waypoint	Species	60mm to 300mm	301mm to 600mm	601mm +	DBH (cm)
156	Bigleaf maple	1			
156	Douglas-fir		1		
156	Arbutus	1	1		34
157	Arbutus		1		35
157	Douglas-fir	1	5		
158	Douglas-fir	2	3	1	63
158	Bigleaf maple	2			
158	Arbutus		1		35
159	Douglas-fir	1	2		
160	Douglas-fir		3		
160	Grand fir	3			
160	Douglas-fir		1		
161	Douglas-fir		1		
162	Douglas-fir			1	70
163	Grand fir		2	2	
163	Douglas-fir		1		
164	Arbutus		1		32
165	Douglas-fir	1	1		
165	Grand fir		1		
166	Holly	3			
166	Douglas-fir	3			
166	Bigleaf maple	2	2		
166	Grand fir	1			
167	Grand fir	4			
167	Bigleaf maple	1			
168	Bigleaf maple	3			
168	Grand fir			1	105
169	Bigleaf maple			1	70
170	Grand fir			1	65
171	Douglas-fir		1		
172	Grand fir	1	1	1	100
173	Bigleaf maple		1		
173	Douglas-fir			1	85
173	Grand fir	1	1		
174	Garry oak	1			
174	Arbutus	1			
174	Douglas-fir			1	62
175	Bigleaf maple	1			
176	Garry oak	1			
176	Douglas-fir		2	1	65
177	Douglas-fir	2		1	65
178	Douglas-fir		1		
179	Arbutus		1		43
179	Arbutus		1		43
180	Douglas-fir		2		
180	Bigleaf maple	1			

Tree Inventory
9 Erskin Lane, Victoria

Completed on May 4th, 2020

Waypoint	Species	60mm to 300mm	301mm to 600mm	601mm +	DBH (cm)
181	Bigleaf maple	2	1	1	65
182	Douglas-fir			2	60, 60
183	Douglas-fir	2			
184	Douglas-fir	1		1	61
185	Douglas-fir		1		
186	Douglas-fir			1	100
187	Arbutus			1	MS 62, 33
188	Bigleaf maple	1			
189	Douglas-fir	4	3		
190	Bigleaf maple	2			
190	Douglas-fir		1		
191	Bigleaf maple	2			
192	Bigleaf maple	3	2		
193	Douglas-fir	2			
194	Willow	2			
195	Douglas-fir			1	75
196	Douglas-fir			1	89
197	Arbutus		1		MS 44, 43
198	Douglas-fir	1	1		
199	Arbutus	1	3		44, 50, 38
200	Douglas-fir	2	1		
201	Arbutus	1			
202	Douglas-fir	3	4	1	62
203	Arbutus		2		35, 46
204	Douglas-fir	2			
205	Douglas-fir	1			
206	Douglas-fir			1	73
206	Cypress	6			
207	Garry oak	1			27
207	Douglas-fir	1			
208	Apple	1			
210	Douglas-fir			1	
211	Douglas-fir			2	65, 92
212	Douglas-fir			1	84
213	Arbutus		2		38, 32
214	Douglas-fir		1		
214	Garry oak	1			18
215	Garry oak	1			29
216	Garry oak	2			11, 21
216	Douglas-fir		1		
223	Garry oak	3			15 ave
224	Douglas-fir		1		
226	Garry oak	1			24
227	Douglas-fir		2		
228	Douglas-fir		1		
229	Douglas-fir	2	1		

Tree Inventory
9 Erskin Lane, Victoria

Completed on May 4th, 2020

Waypoint	Species	60mm to 300mm	301mm to 600mm	601mm +	DBH (cm)
230	Garry oak	1			15
231	Douglas-fir	1	2		
231	Garry oak	1			25
232	Douglas-fir		1	1	65
232	Garry oak	1			10
233	Arbutus		1		37
234	Arbutus		1		MS 37, 20
235	Douglas-fir			1	64
235	Garry oak	2			25, 15
236	Arbutus	2			
236	Garry oak	2			25, 16
236	Douglas-fir		1		
237	Garry oak	2			20, 18
238	Arbutus	1			
238	Douglas-fir			1	62
239	Garry oak	1			15
240	Arbutus	2			
241	Douglas-fir		2	1	61
241	Garry oak	1			15
242	Garry oak	1			15
242	Arbutus		1		38
243	Douglas-fir	1			
243	Arbutus	1			
244	Arbutus	1			
244	Garry oak	2			15, 10
245	Arbutus	2			
245	Douglas-fir		1		
245	Garry oak	2			15, 7
247	Bigleaf maple	1			
248	Garry oak	3			25, 25, 20
249	Bigleaf maple	2			
250	Bigleaf maple	1			
251	Bigleaf maple	2			
252	Bigleaf maple	1			
253	Garry oak	2			10, 10
254	Garry oak	4			10 ave
255	Garry oak	4			25, 10, 10, 15
256	Garry oak	2			20, 10
257	Garry oak	5			15 ave
258	Garry oak	5			10 ave
259	Garry oak	4			15 ave
260	Garry oak	3			15 ave
261	Garry oak	4			15 ave
262	Garry oak	6			15 ave
263	Garry oak	2			15 ave
264	Garry oak	2			20, 7

Tree Inventory
9 Erskin Lane, Victoria

Completed on May 4th, 2020

Waypoint	Species	60mm to 300mm	301mm to 600mm	601mm +	DBH (cm)
265	Arbutus	1			
265	Garry oak	7			15 ave
266	Garry oak	10			15 ave
267	Garry oak	10			15 ave
268	Garry oak	5			10 ave
270	Garry oak	8			18 cm ave
270	Arbutus	2			
271	Garry oak	4			20, 10, 10, 10
272	Douglas-fir		1		
273	Garry oak	3			15 ave
273	Arbutus	1			
274	Arbutus	1			25
275	Douglas-fir	5	2		
275	Arbutus	2			
276	Douglas-fir	3	3		
276	Arbutus	1			
277	Douglas-fir	1	1		
277	Garry oak	4			20 ave
278	Garry oak	3			15 ave
278	Douglas-fir	3	4		
279	Arbutus		1		
279	Garry oak	4			28, 15, 15, 15
280	Garry oak	1			10
281	Garry oak	3			15 ave
281	Douglas-fir	1			
281	Arbutus	1			
282	Douglas-fir	2	1		
282	Garry oak	1			15
283	Garry oak	4			20 ave
283	Arbutus	2			
284	Douglas-fir	2	3		
285	Garry oak	2			15 ave
285	Douglas-fir		2		
285	Arbutus	3			
286	Douglas-fir	1	3		
286	Arbutus		1		
287	Garry oak	1			15
288	Garry oak	1			15
289	Douglas-fir			1	69
290	Garry oak	1			13
291	Garry oak	1			26
292	Arbutus	1			
292	Douglas-fir	1			
292	Garry oak	1			27
293	Arbutus	1			
294	Garry oak	1			22

Tree Inventory
9 Erskin Lane, Victoria

Completed on May 4th, 2020

Waypoint	Species	60mm to 300mm	301mm to 600mm	601mm +	DBH (cm)
294	Arbutus	1			
294	Douglas-fir	1			
295	Garry oak	2			13 ave
295	Douglas-fir	1			
296	Garry oak	1			13
297	Garry oak	1			12
298	Douglas-fir	1			
299	Garry oak	2			15 ave
300	Douglas-fir	2		1	79
300	Garry oak	2			23 ave
301	Douglas-fir	4	3		
302	Garry oak	3			12 ave
303	Garry oak	4			20 ave
303	Douglas-fir		1		
304	Garry oak	1			17
305	Douglas-fir		3		
305	Garry oak	1			12
306	Douglas-fir	2	1	1	64
307	Arbutus	1			
308	Douglas-fir		1		
309	Garry oak	1			28
309	Douglas-fir	3			
309	Arbutus		1		32
310	Douglas-fir	3	2		
310	Arbutus		1		
311	Douglas-fir		1	1	63
312	Douglas-fir	2	1		
313	Douglas-fir		1		
314	Douglas-fir	3	3		
314	Arbutus	1			
315	Bigleaf maple	1			
315	Douglas-fir	4	1		
316	Douglas-fir	6	1		
316	Arbutus	1	1		46
317	Willow	1			
317	Douglas-fir	2	1		
318	Douglas-fir		1		
318	Arbutus	1			
318	Hawthorn	1			
319	Douglas-fir			1	70
320	Arbutus	1			
321	Douglas-fir	1			
322	Garry oak	1			22
322	Douglas-fir		1		
323	Douglas-fir	1			
324	Douglas-fir			1	92

Tree Inventory
9 Erskin Lane, Victoria

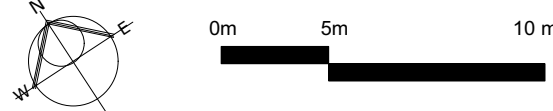
Completed on May 4th, 2020

Waypoint	Species	60mm to 300mm	301mm to 600mm	601mm +	DBH (cm)
324	Arbutus			1	MS 42,30,51
325	Douglas-fir		1		
325	Garry oak	1			15
326	Douglas-fir			1	67
327	Garry oak	1			15
327	Douglas-fir		2		
328	Douglas-fir		2	1	70
328	Bigleaf maple	1			
329	Douglas-fir	2	1		
329	Bigleaf maple	1			
330	Bigleaf maple	1			
331	Douglas-fir			1	72
332	Garry oak	1			25
333	Arbutus	2			
333	Douglas-fir	4	1		
334	Arbutus		1		43
334	Douglas-fir	2			
334	Garry oak	1			10
335	Douglas-fir	1	1		
336	Garry oak		1		35
337	Garry oak	10			10 ave
338	Douglas-fir	1	1		
338	Garry oak	1			15
339	Douglas-fir			1	74
339	Garry oak	1			25
340	Douglas-fir		1	1	64
340	Garry oak	1			10
341	Garry oak	3			10
342	Garry oak	1			28
342	Douglas-fir		2		
343	Douglas-fir		3		
344	Garry oak	2			6, 10
345	Garry oak	1			15
345	Douglas-fir	1			
346	Garry oak	4			13 ave
346	Douglas-fir		1		
347	Douglas-fir		2		
348	Douglas-fir		1		
349	Douglas-fir	1			
349	Garry oak				10
349	Arbutus		1		40
350	Douglas-fir	1			
350	Garry oak	1			10
350	Arbutus	1			
351	Douglas-fir	1		1	78
352	Douglas-fir	4			

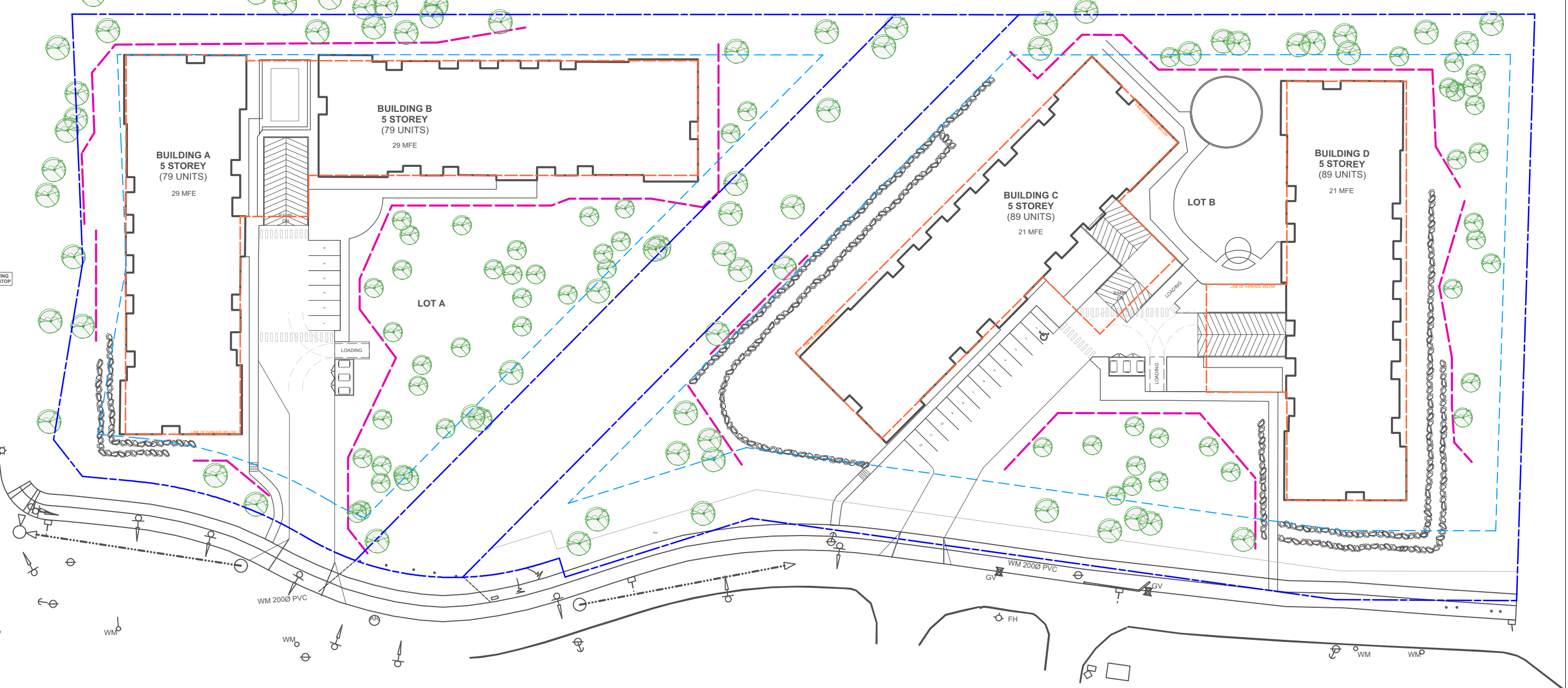
Tree Inventory
9 Erskin Lane, Victoria

Completed on May 4th, 2020

Waypoint	Species	60mm to 300mm	301mm to 600mm	601mm +	DBH (cm)
353	Douglas-fir	3			
354	Balsam fir	2			
355	Douglas-fir		1		
356	Douglas-fir	2		1	80
356	Arbutus	2			
357	Douglas-fir	1			
357	Arbutus	1			
358	Willow	1			
358	Douglas-fir		1		
359	Douglas-fir	1	1	1	76
360	Arbutus	1			
360	Bigleaf maple	1			
361	Douglas-fir	3			
361	Arbutus	1			
361	Bigleaf maple	1			
362	Arbutus	2			
362	Douglas-fir	1			
363	Douglas-fir	7			
363	Arbutus	3			
364	Bigleaf maple	1			
364	Douglas-fir		1		
365	Garry oak	4			15 ave
365	Douglas-fir	1			
366	Douglas-fir	1			
367	Douglas-fir		1		
367	Garry oak	1			10
368	Arbutus	1			
369	Douglas-fir			1	ms 100+
369	Arbutus		2		33, 43
370	Douglas-fir		1		
371	Arbutus	2			
372	Douglas-fir	2			
372	Arbutus	1			
373	Douglas-fir	1		1	63
374	Arbutus	3			
375	Arbutus	3			
		679	317	96	

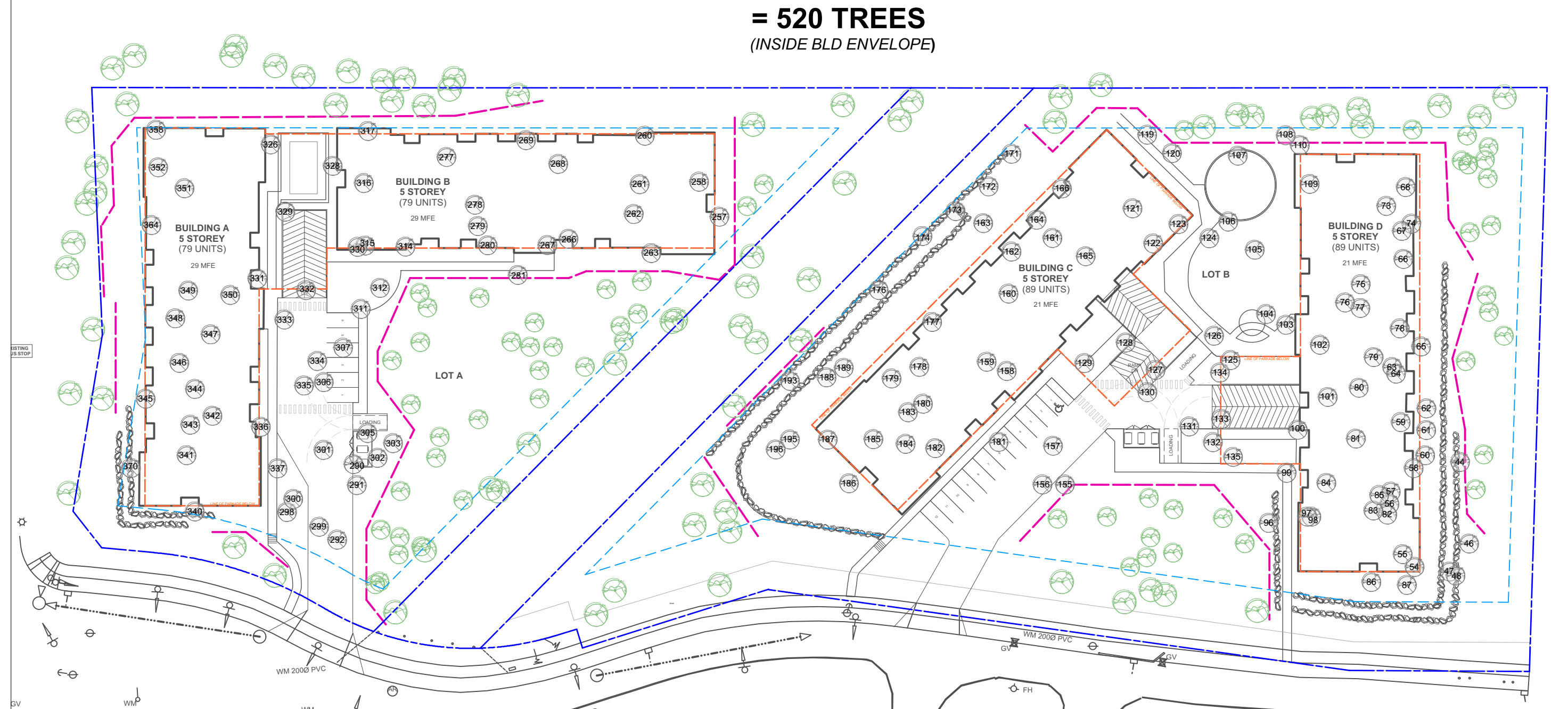


**OVERALL TREES TO BE RETAINED
= 428 TREES**



Indicates Location of Waypoint ID Pin
For Existing Trees To Be **Retained** if Possible
INSIDE & OUTSIDE BUILDING ENVELOPE **TOTAL ID PINS TO BE RETAINED 130**
Refer To MJR Tree Report For Detailed Information

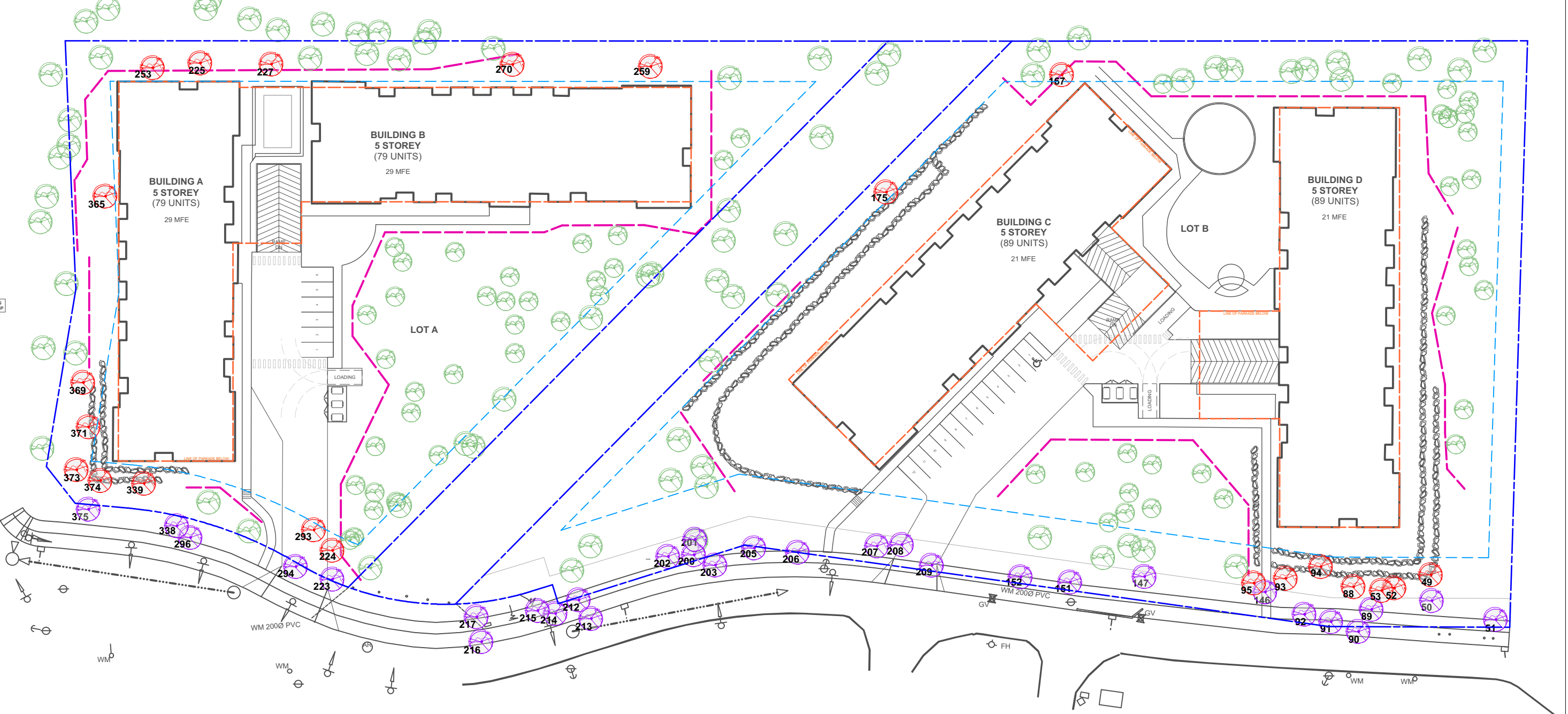
**TREES TO BE REMOVED INSIDE BUILDING ENVELOPE / SETBACK
= 520 TREES
(INSIDE BLD ENVELOPE)**



Indicates Location of Waypoint ID Pin
For Existing Trees To Be **Removed**
INSIDE BUILDING ENVELOPE **TOTAL ID PINS TO BE REMOVED 159
(520 TREES)**
Refer To MJR Tree Report For Detailed Information

**TREES TO BE REMOVED OUTSIDE BUILDING ENVELOPE / SETBACK
AND ALONG THE ROW FOR REQUIRED SIDEWALK ROAD IMPROVEMENTS**

61 (OUTSIDE BLD ENVELOPE) + 83 (IN ROW) = 144 REMOVED TREES



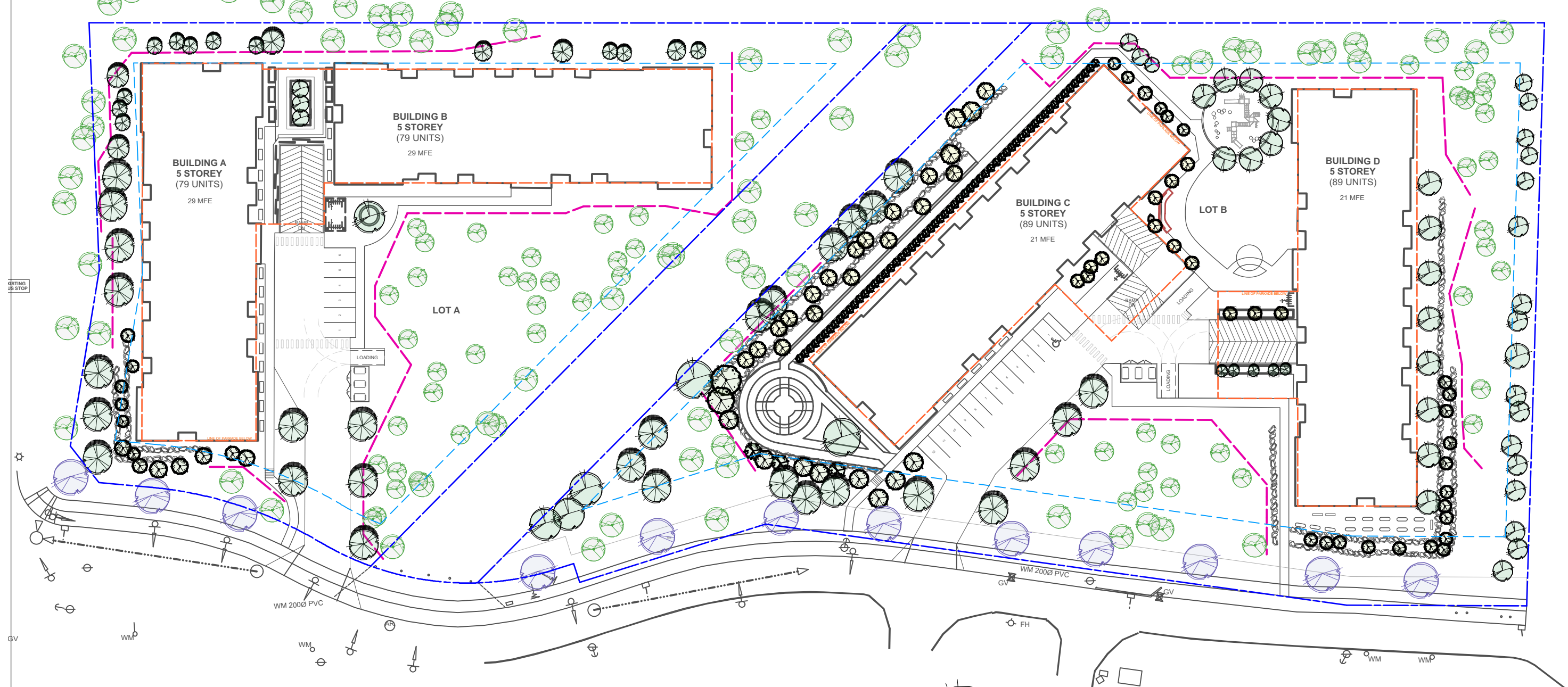
Indicates Location of Waypoint ID Pin
For Existing Trees To Be **Removed**
OUTSIDE BUILDING ENVELOPE **TOTAL ID PINS TO BE REMOVED 22
(61 TREES)**
Refer To MJR Tree Report For Detailed Information

Indicates Location of Waypoint ID Pin
For Existing Trees To Be **Removed**
IN ROW - OUTSIDE BUILDING ENVELOPE
TREES REMOVED DUE TO CITY SIDEWALK REQUIREMENTS **TOTAL ID PINS TO BE REMOVED 30
(83 TREES - 57 on site & 26 off site)**
Refer To MJR Tree Report For Detailed Information

OVERALL RETAINED AND NEW PROPOSED TREES

428 RETAINED EXISTING + 250 PROPOSED TREES (238 NEW ON SITE & 12 NEW IN ROW)

678 TOTAL TREES



Indicates Location of Waypoint ID Pin
For Existing Trees To Be **Retained** if Possible
INSIDE & OUTSIDE BUILDING ENVELOPE **TOTAL ID PINS TO BE RETAINED 130**
Refer To MJR Tree Report For Detailed Information

Proposed New On Site Trees
TOTAL PROPOSED 238

Proposed New Trees in ROW
TO BE APPROVED BY CITY
TOTAL PROPOSED 12

GENERAL LEGEND

- Property Line
- Setback Line (Building Envelope)
- Underground Parkade
- Approximate Extent & Location of Tree Protection Fencing
Exact Location to be Confirmed by Arborist After on Site
Inspection of Trees & Individual RPZ (ROOT PROTECTION ZONE)

SUMMARY

TOTAL EXISTING TREES ON SITE = 1092
TOTAL EXISTING TREES TO BE RETAINED = 428
TOTAL PROPOSED REMOVED = 664

**TREES AT ID PIN LOCATIONS TO BE REMOVED
OUTSIDE BUILDING ENVELOPE / SETBACK LINE = 118
(FOR CONSTRUCTION OF BUILDINGS, PARKADE)**

**REQUIRED REPLACEMENT TREES AS PER BYLAW FOR TREES
REMOVED OUTSIDE BUILDING ENVELOPE / SETBACK LINE**

REPLACED AT 2-1 RATIO (118 Trees x 2) NEW TREES REQUIRED = 236

NEW TREES PROPOSED = 250
TOTAL TREES (PROPOSED + RETAINED) = 678

**NOTE: THIS PLAN IS TO BE READ IN CONJUNCTION
WITH MJR TREE SERVICE, TREE INVENTORY REPORT
DATED MAY 4th 2020**

**TOTAL WAYPOINT ID PINS LOCATED ON SITE & IN ROW = 341
WHICH REPRESENTS A TOTAL OF 1092 TREES.**

**ID PIN SYMBOLS & CORRESPONDING NUMBERS HAVE BEEN
PROVIDED FOR TREES TO BE REMOVED ONLY.**

Date	Revisions	By
AUG 7 2020	FOR REZONING	LS



Project
WESTURBAN DEVELOPMENTS
Erskine Lane

Sheet Title
Tree Management Plan

Date
May 10, 2020

Scale
1:700 METERS

Drawn By
LS/SD

Project No.

Copyright reserved. This drawing and the design are, and at all times remain the exclusive property of Lazzarin Svisdahl Landscape Architects and cannot be used without the Landscape Architect's written consent.

Drawing No.

L 2